

Preparing Your Computer for Blackboard Learning System

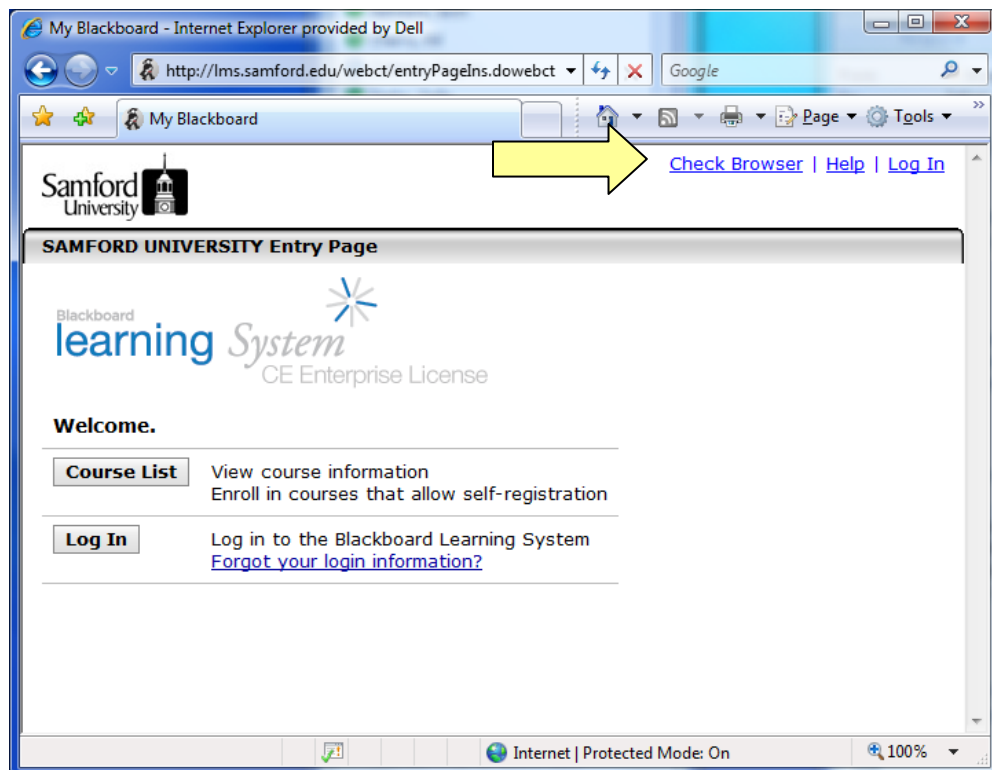
Your browser must be configured correctly for Blackboard to work properly. Please follow these steps to prepare Internet Explorer 7 for Windows to run Blackboard. For a list of other supported browsers as well as more information on browser requirements, go to <http://www.webct.com/tuneup>.

OVERVIEW

1. Check the browser.
2. Accept the Java security certificate.
3. Enable pop-ups.
4. Adjust security settings.

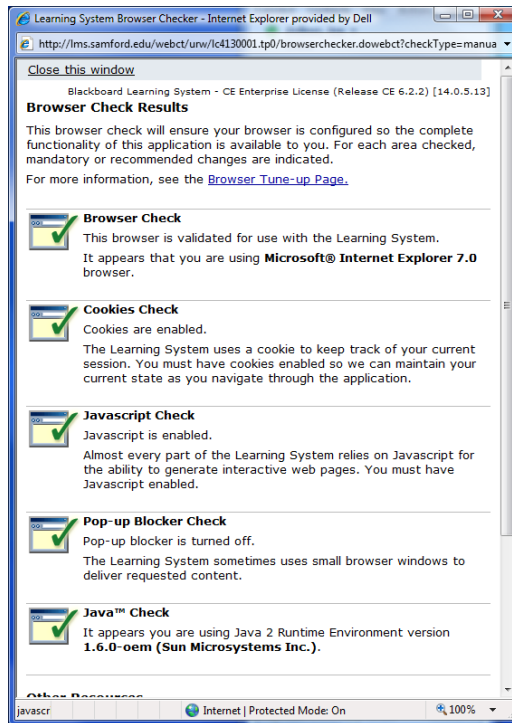
DETAILED STEPS

1. **Check the browser.**
 - a. Go to the Log In page for Blackboard (<http://lms.samford.edu>).
 - b. Click **Check Browser**:



Handout 1: Preparing Your Computer for Blackboard Learning System

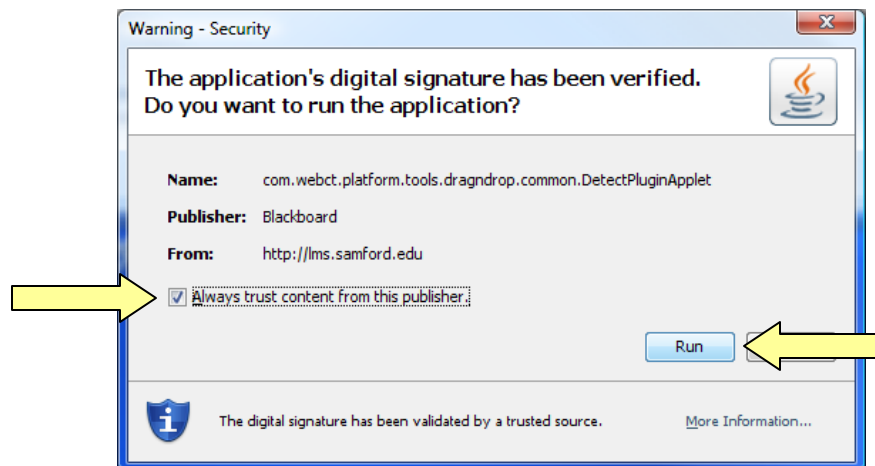
c. Carefully read the Browser Check Results:



- d. Note any areas that do not pass the browser check and make the recommended changes.
- e. Close the **Browser Check Results** window.

2. Accept the Java security certificate.

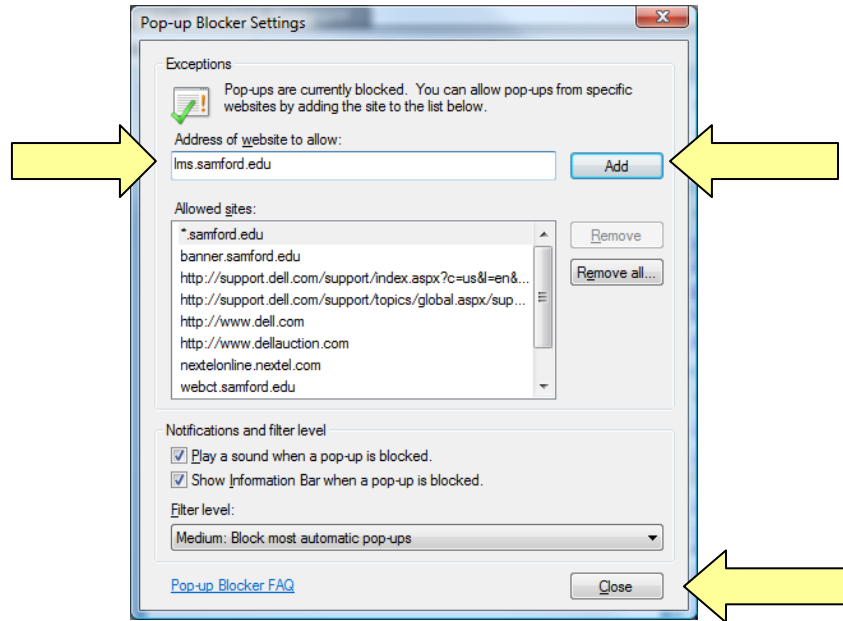
- a. Log in to Blackboard by typing your user name and password and clicking **OK**.
- b. When the Java security certificate appears, make sure **Always trust content from this publisher** is checked, then click **Run**:



*Note: If you are running an older version of Java, the verbiage may be slightly different (e.g., you must click a button labeled **Always**). You must accept the Java security certificate and be running a supported version of the Java Runtime Environment in order to upload files and use certain tools, such as the Chat Tool and the HTML Creator.*

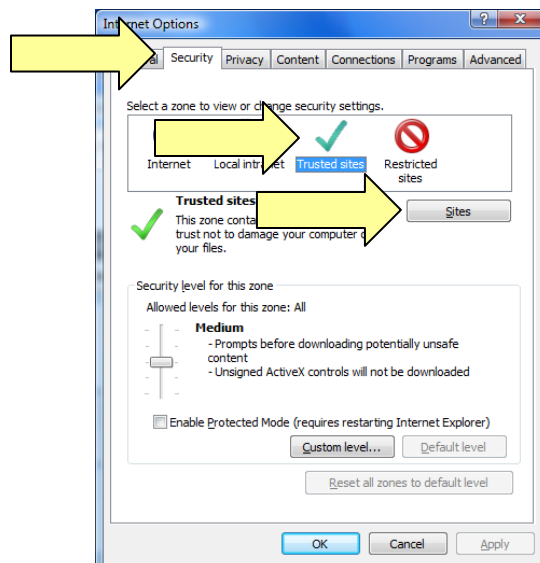
3. Enable pop-up windows.

- a. On the **Tools** menu, click **Pop-up Blocker**→**Pop-up Blocker Settings**:
- b. Type **lms.samford.edu** and click **Add**. Then click **Close**:

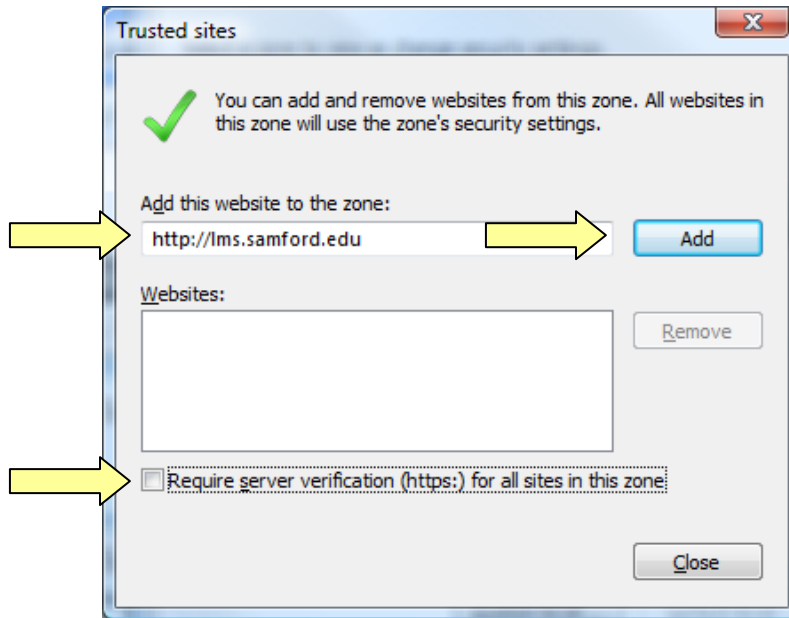


4. Adjust Security settings

- a. On the **Tools** menu, click **Internet Options**.
- b. Click on the **Security** tab, then **Trusted Sites**, then **Sites**:



- c. In the **Trusted Sites** window, uncheck **Require server verification (https:) for all sites in this zone**. Next, under **Add this web site to the zone**, enter **http://lms.samford.edu**. Then click **add**, then **Close**.



Need more help?

- For additional assistance updating your browser or Java, please contact the User Services Help Desk at 726-2662.
- For additional assistance using Blackboard, please contact Joe Zellner:

Joe Zellner
jmzellne@samford.edu
726-2108